



PENNSYLVANIA  

---

ECONOMY LEAGUE

Information, Insight, Integrity.

# Methacton School District

# Overview

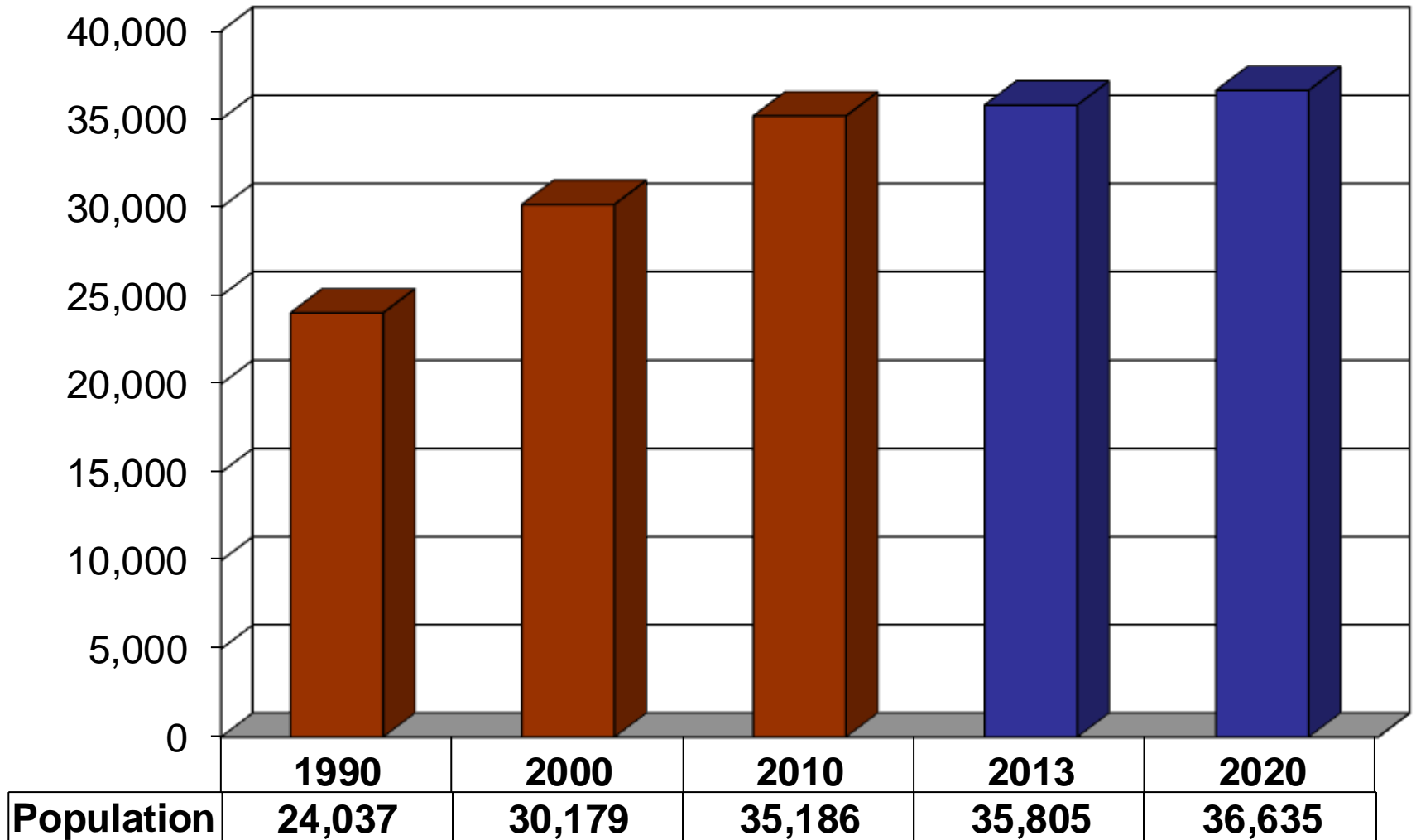
**Goal:** Project public school enrollments

**Purpose:** Informed decision making

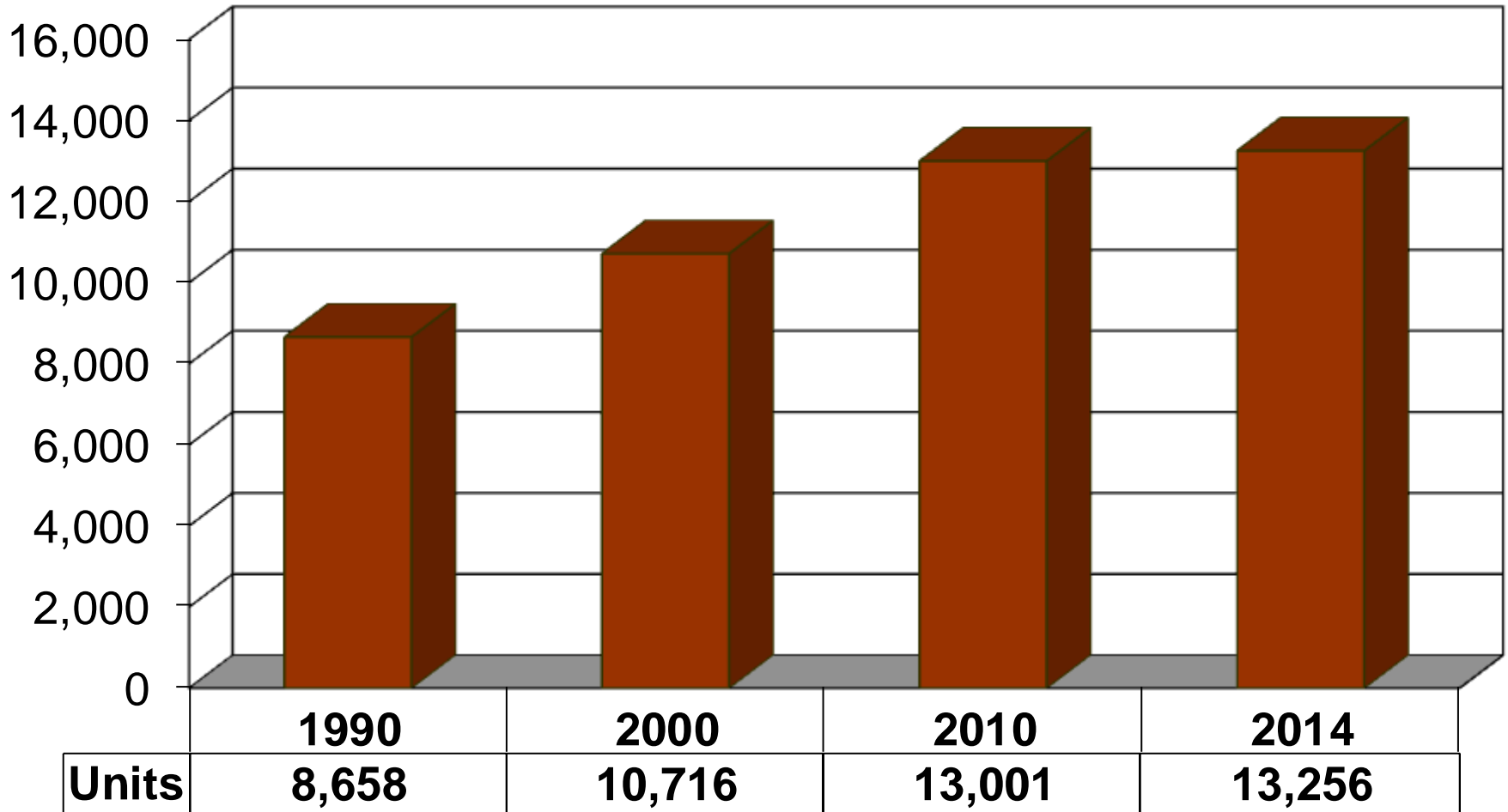
**Process:**

- Review population, births and enrollments
- Analyze community development activity
- Assess various relationships/indicators
- Develop model and generate projections

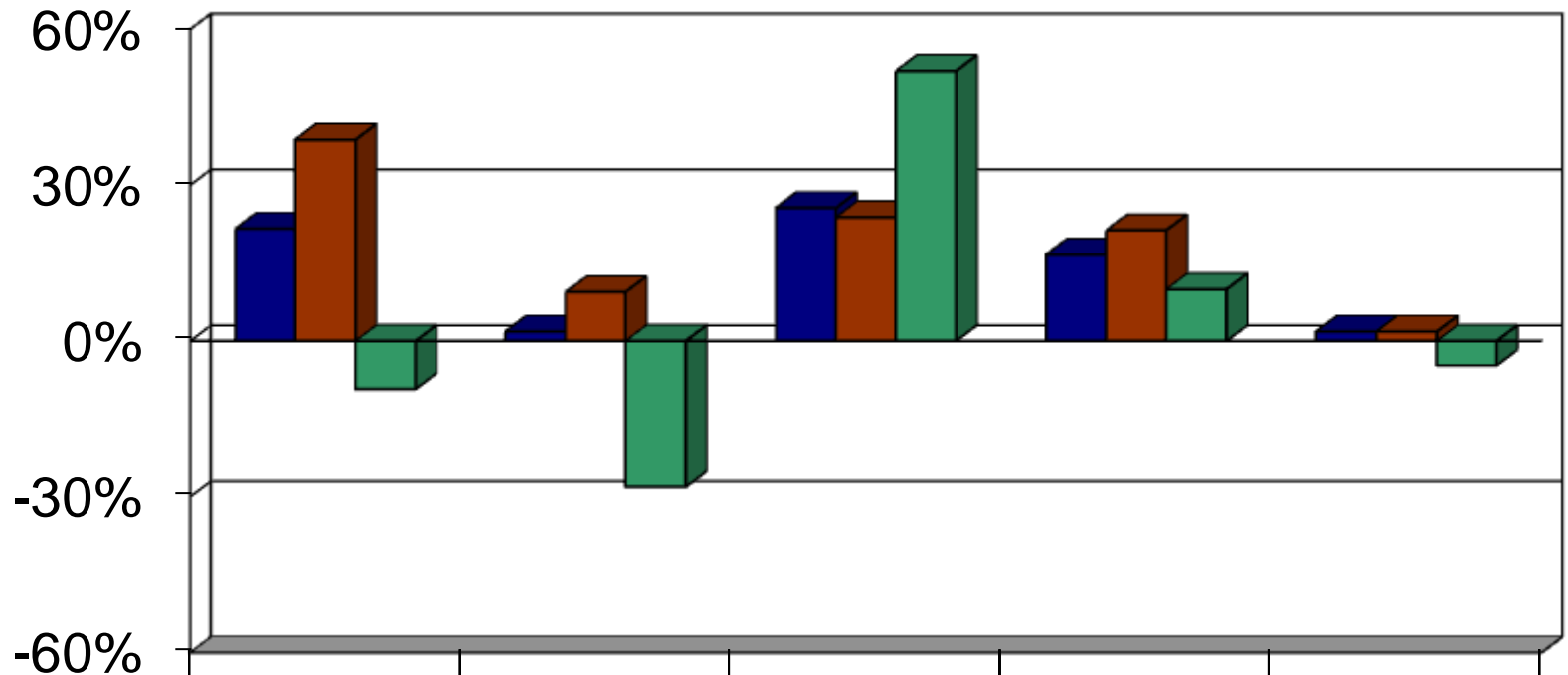
# Population Trends



# Total Housing Units

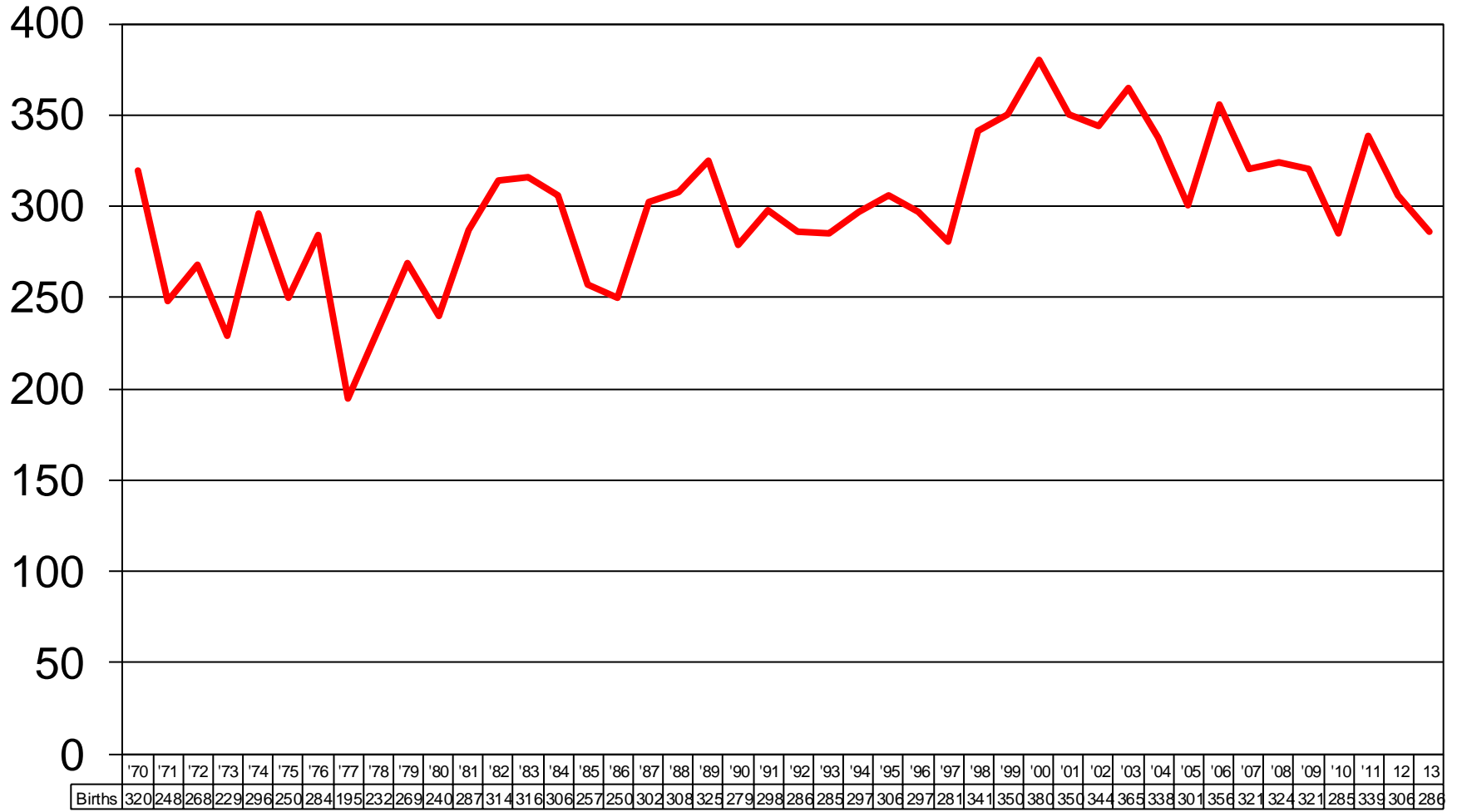


# Population, Housing Units & Enrollments

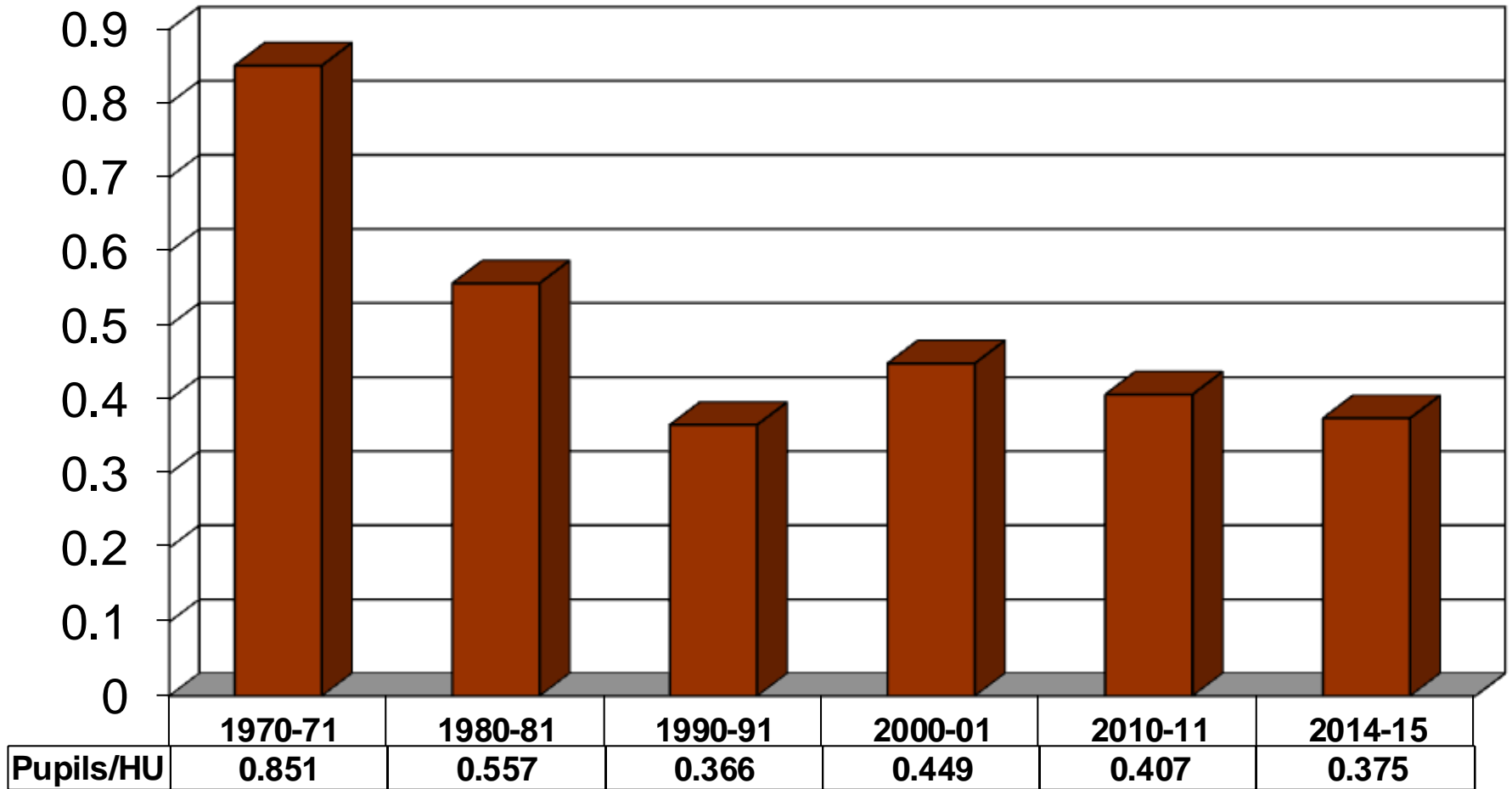


	1970-1980	1980-1990	1990-2000	2000-2010	2010-2013
Population	21.6%	1.8%	25.6%	16.6%	1.8%
Housing Units	38.7%	9.4%	23.8%	21.3%	1.8%
Total Enrollment	-9.2%	-28.1%	52.0%	9.9%	-4.7%

# Births

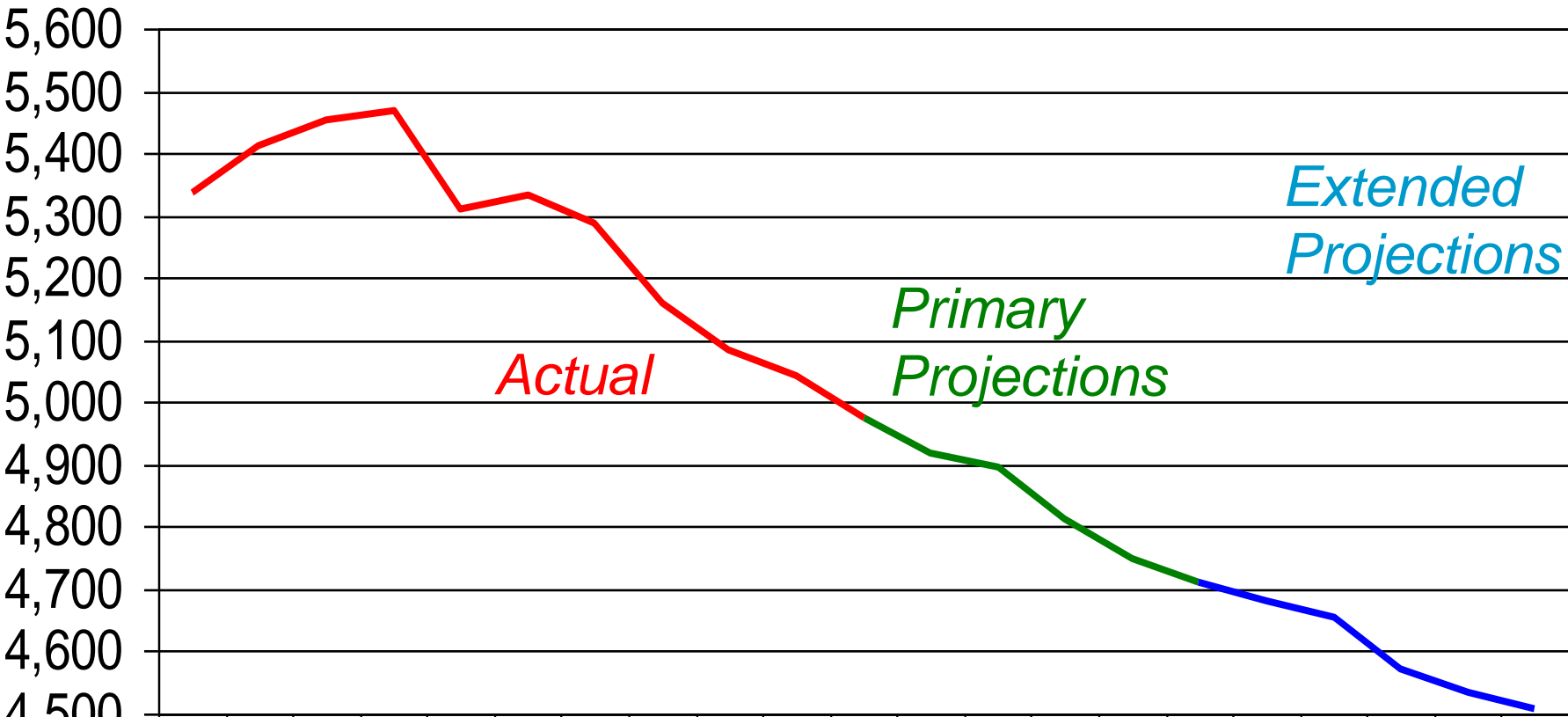


# Pupils Per Housing Unit



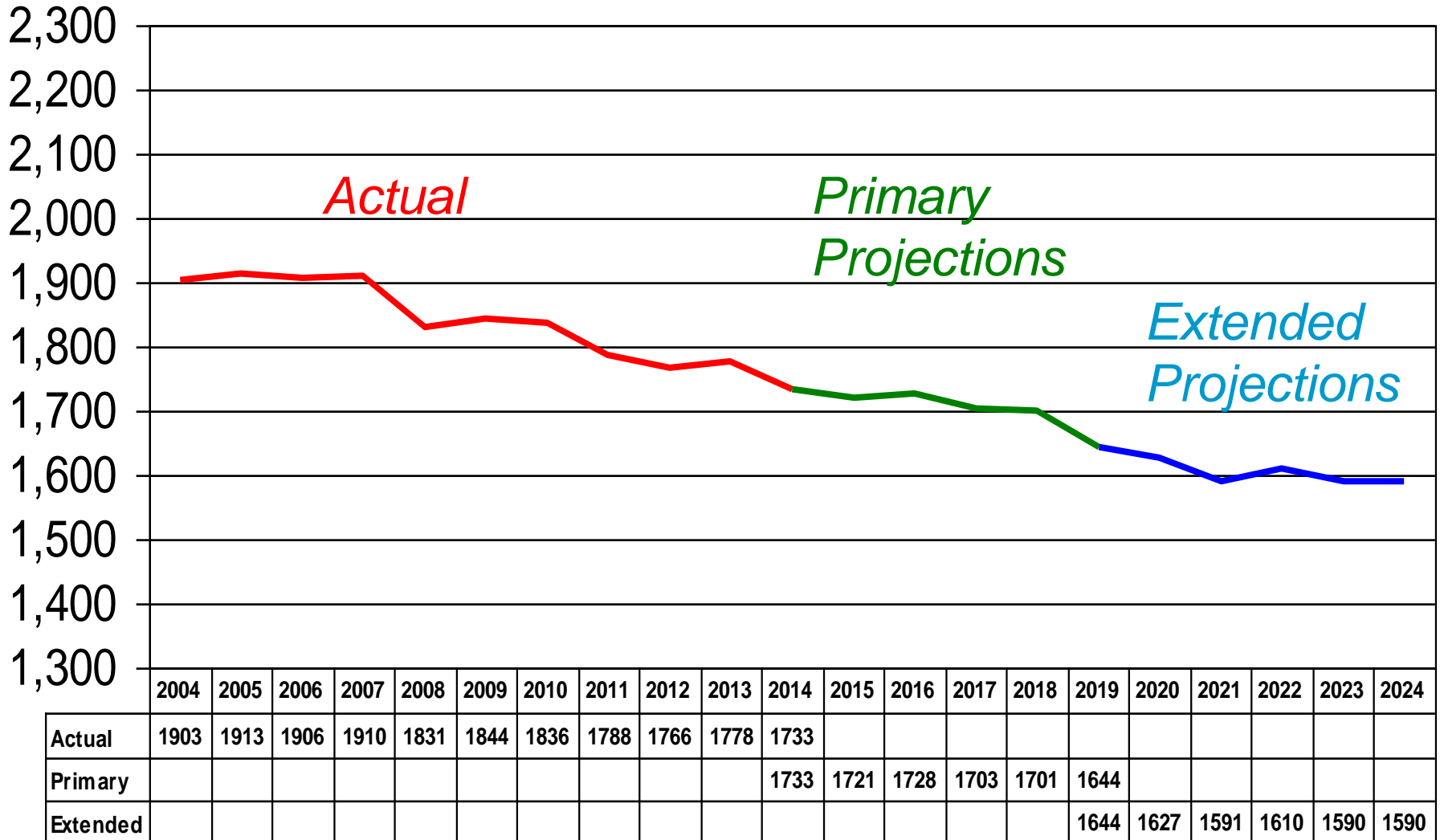


# Total Enrollments

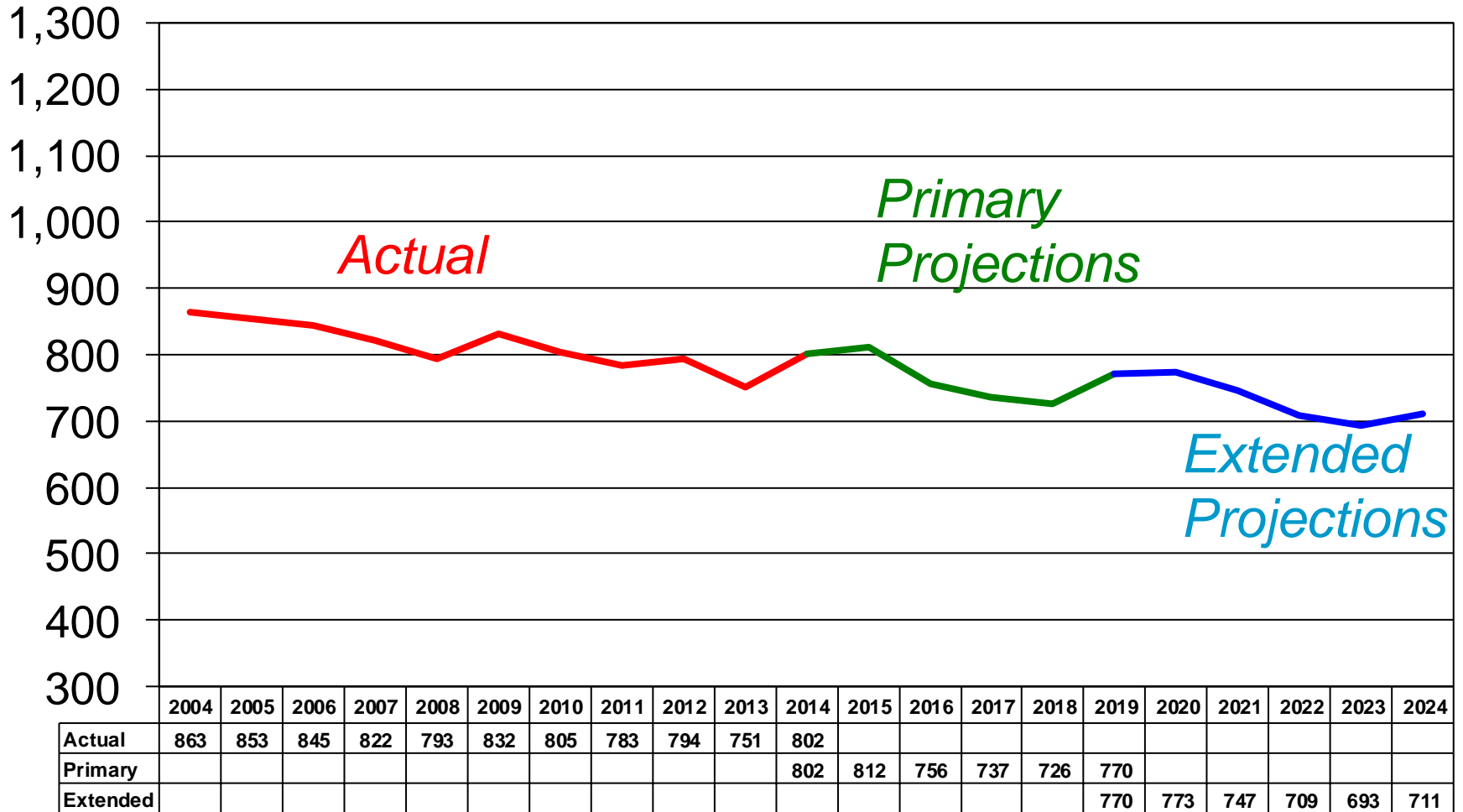


	2004	2005	2006	2007	2008	2009	2010	2011	2012	2013	2014	2015	2016	2017	2018	2019	2020	2021	2022	2023	2024
<b>Actual</b>	5,338	5,413	5,454	5,469	5,310	5,332	5,289	5,161	5,085	5,042	4,974										
<b>Primary</b>											4,974	4,920	4,894	4,812	4,747	4,710					
<b>Extended</b>																4,710	4,682	4,656	4,572	4,535	4,509

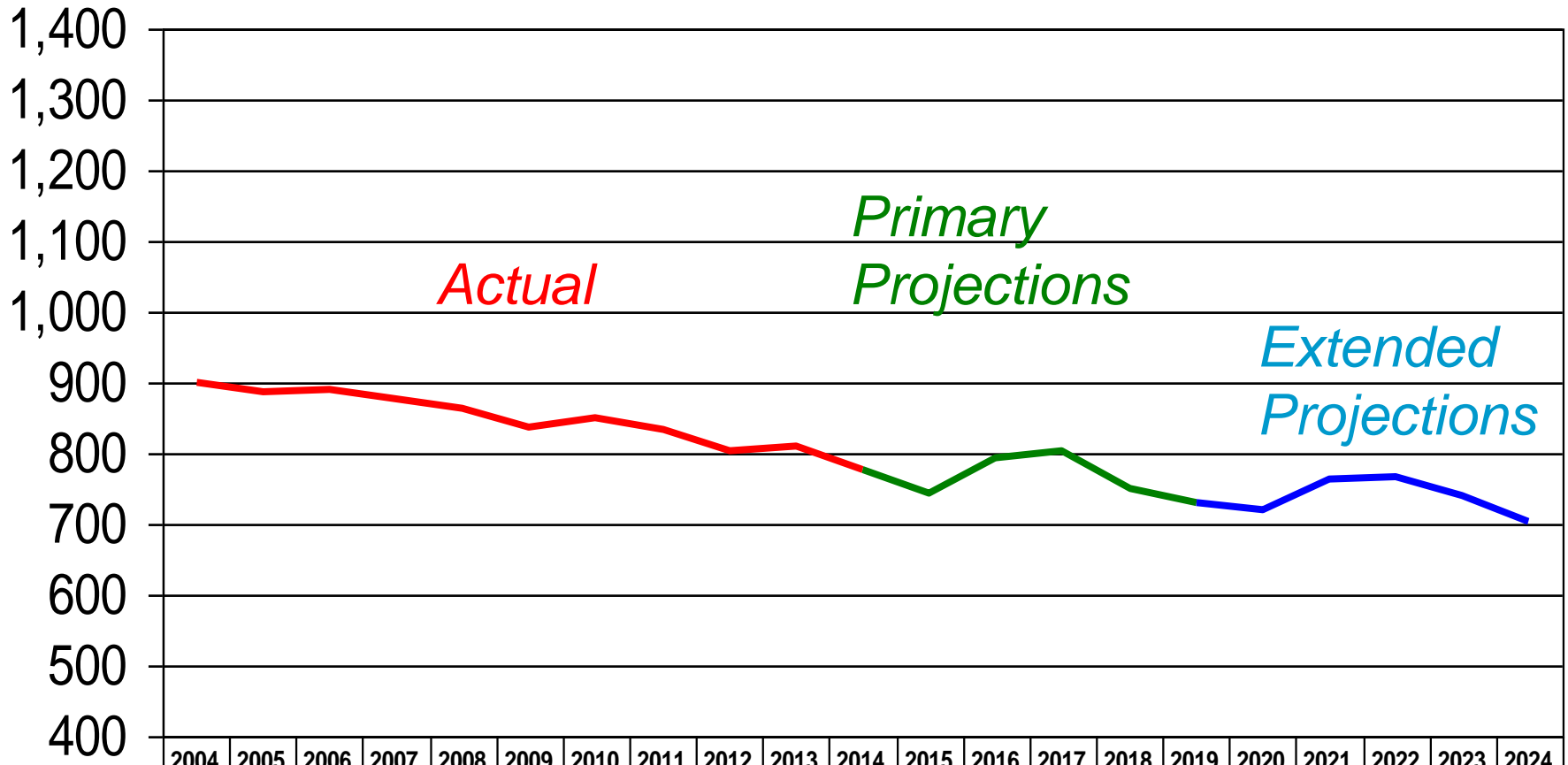
# Elementary Enrollments (K-4)



# Upper Elementary Enrollments (5-6)



# Intermediate School Enrollments (7-8)



	2004	2005	2006	2007	2008	2009	2010	2011	2012	2013	2014	2015	2016	2017	2018	2019	2020	2021	2022	2023	2024	
<span style="color: red;">—</span> Actual	899	886	890	877	863	838	851	833	803	811	777											
<span style="color: green;">—</span> Primary											777	742	794	805	749	731						
<span style="color: blue;">—</span> Extended																731	720	763	767	740	703	



# Closing Comments

- Accuracy
- Uncertain Events
- Ongoing Monitoring ... Early Warning
- Words of Caution
- Reasonable and Realistic Projections



PENNSYLVANIA  

---

ECONOMY LEAGUE

Information, Insight, Integrity.